



Lesson written by Vanessa Page. 2001
Copyright Augachel Pty Ltd. 2001

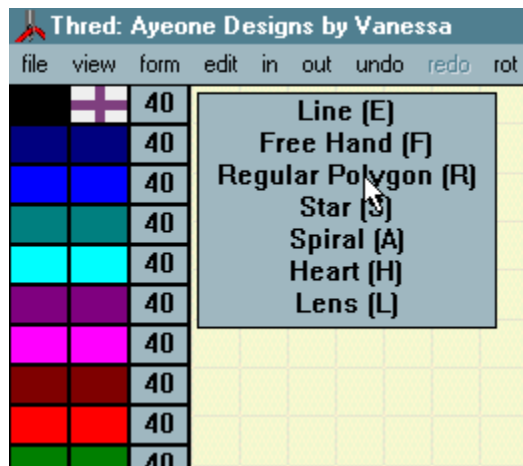
FRINGE FLOWER IN THRED

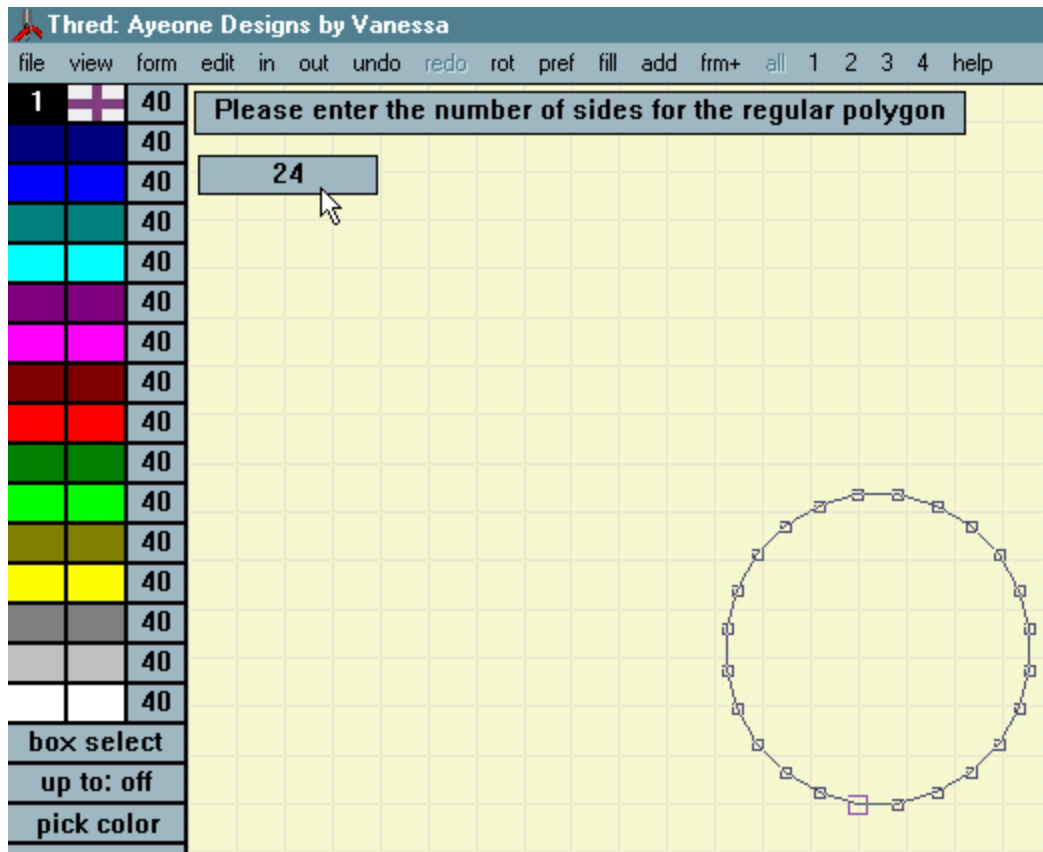


I created this fringed flower in Thred. I used the same technique as we did for the satin shape circle in the last lesson.
I have done an image of my preferences below.

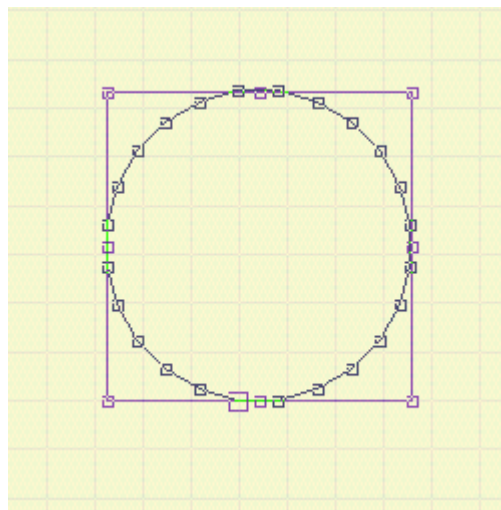
Fill spacing	0.30
Fill angle	30.00
Fill ends	Pointed
Satin border size	1.50
Maximum stitch length	18.00
User stitch length	2.50
Minimum stitch length	1.00
Grid cutoff	0
Stitch box cutoff	3
Small stitch size	0.25
Applique color	15
Snap to size	0.15
Star ratio	0.40
Spiral wrap	1.52
Button corner length	4.00
Satin form Ends	Tapered
Picot spacing	0.50
Hoop Type	100mm
Hoop Width	100 mm
Hoop Height	100 mm
Satin Underlay	On
Grid Size	3.00
Vert clipboard offset	2.00
Vert clipboard phase	5

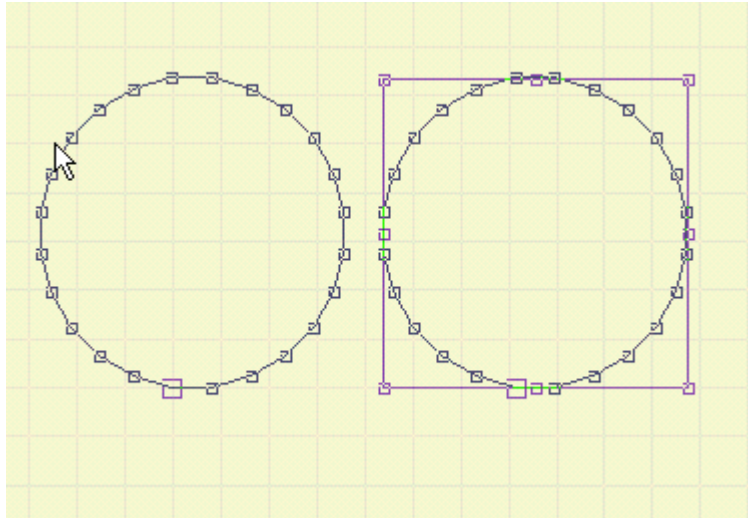
1. Open Thred. Now we are going to choose a shape. Click Form – Regular Polygon –24



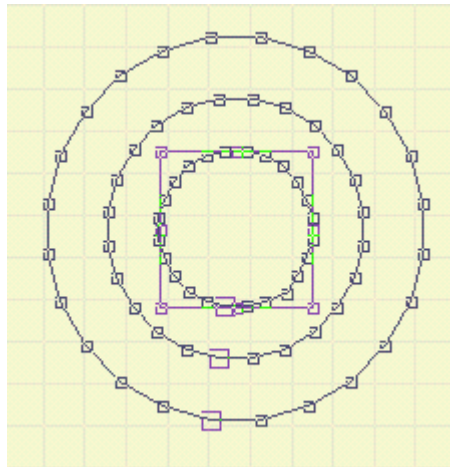


2. We now have a circle. Right Click to select the Form. Click Control C – Control V to copy this circle.

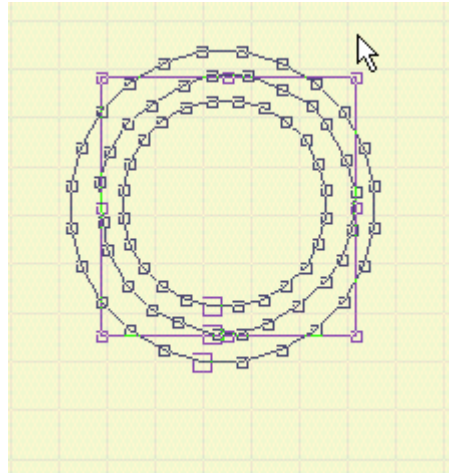




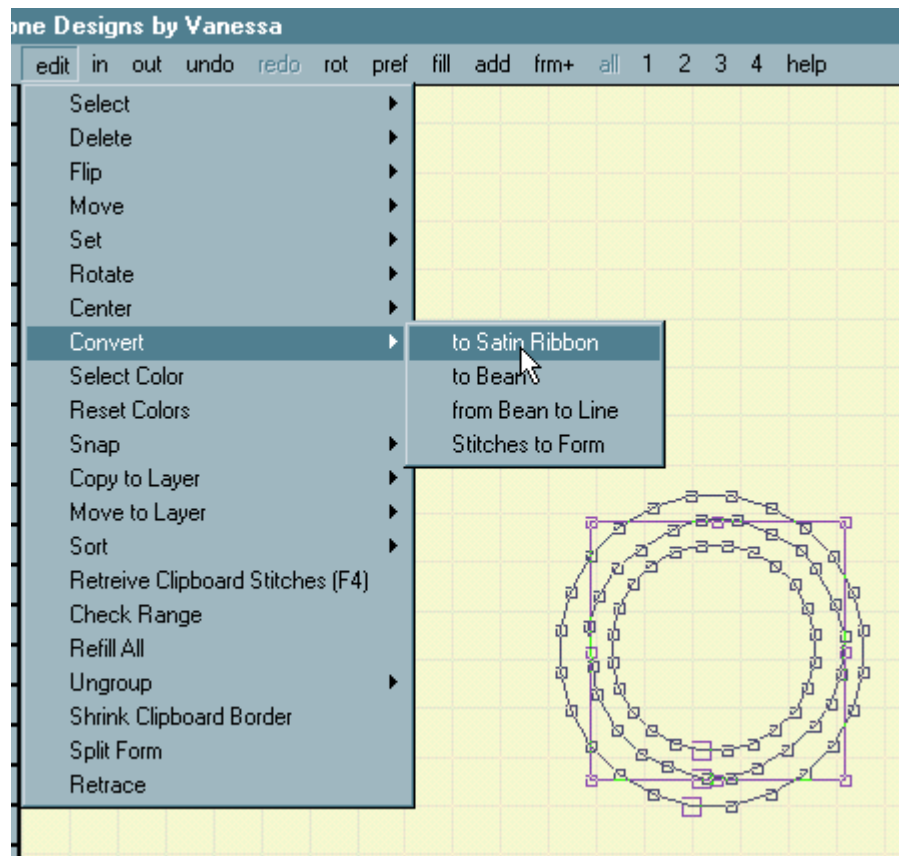
3. **Decrease the size of the Circle make sure you make the inner circle small enough for the flower centre and move it to the Centre of the other circle.**



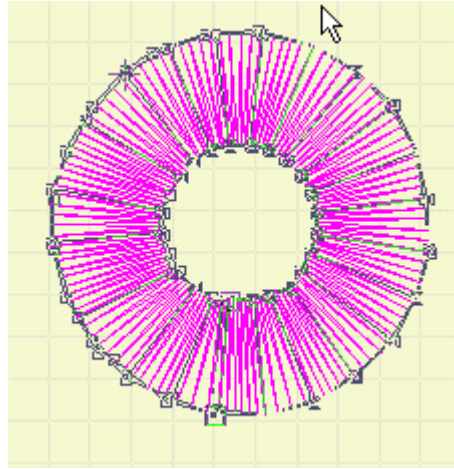
4. **Now Click Form – Line. Make Points in between the 2 circles evenly around the circle ending at the start point. **Don't use the copy/paste for the middle circle or you will need to add points.****



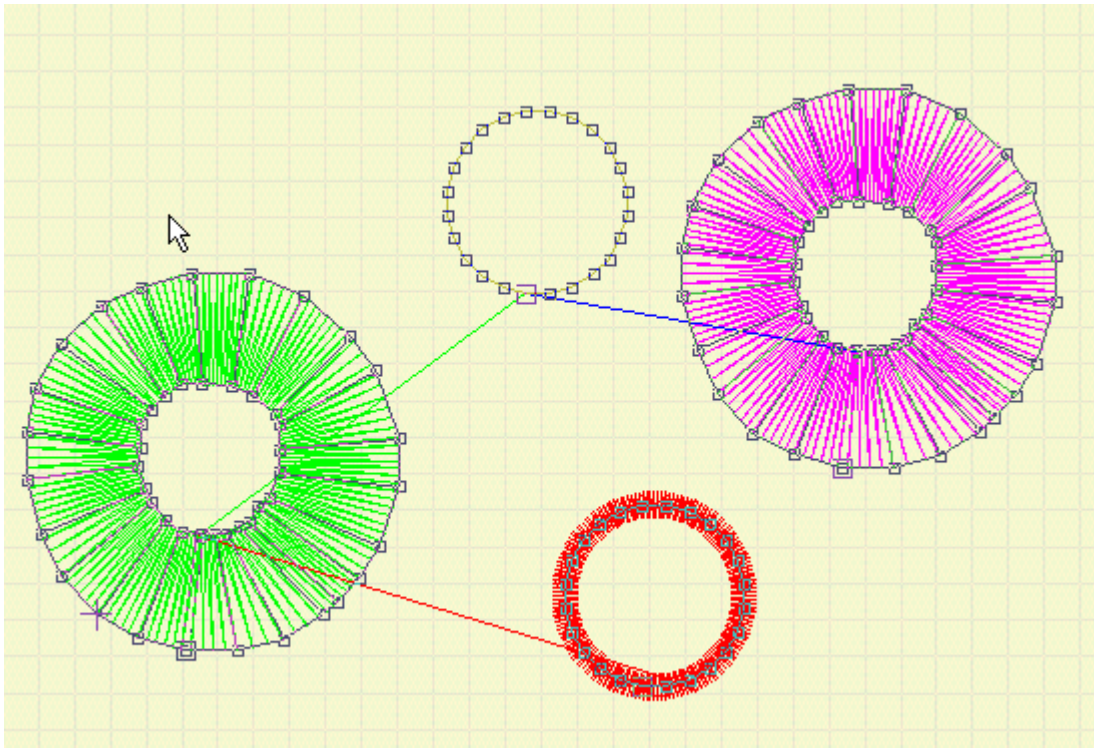
5. Now Click Edit – Convert – Satin Ribbon.
6. If you want you can centre the circles on the page. **Just click the (-) button after selecting the form you want to centre. To make life easier zoom in so you can see what you are doing. Put your mouse cursor in the centre of the small circle and click the (M) key. Now click the (Z) key to zoom in.**



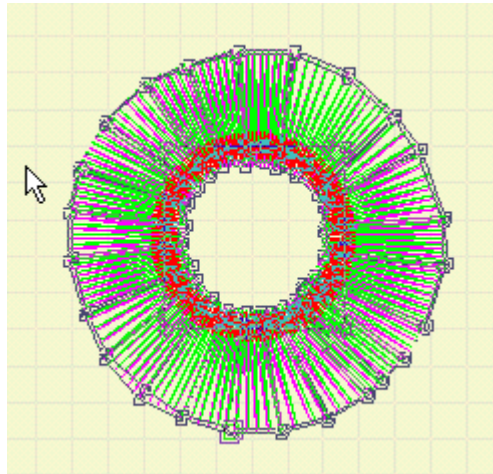
7. As before move the stitches to the outer and inner circles. You will have longer stitches this time. (Don't make them too wide or you will get added stitches and we don't want those.)



8. Select the outer form and delete it. Select the Flower form now duplicate it and move it to one side. Move the first flower circle to one side as well. Select the small circle and click Fill – Border – Line.



9. Duplicatate the small circle and click Fill – Border – Angle Satin.
10. Check the Satin has a 2.00 width.
11. Move the Second part of the flower onto the top of the bottom flower.
12. Enlarge the small circle a fraction so that it will hold down the flower stitches when machined out. Now move the line border to the centre of the flower.
13. Select the Satin form and move it to the centre of the flower.
(Notice I had underlay selected to give the flower more anchorage)
14. I have used different colors to help me see the design better.



15. Run the View – Movie and watch how it stitches out. Make sure the 1st flower part is stitched 1st, the second flower part is stitched next on top. Now the line stitches to hold them down and lastly the satin to finish the design.
16. If you want a centre for your flower then include a Fill for the centre of the Satin Border. Or alternatively use the small circle and fill with a clipboard fill.

When you machine out the design you can use 2 colours as I did or it can be done using 1 colour. When you have finished machining you need to cut the threds at the back of the design. Make sure you done cut the fabric. I used Calico for my sample and light weight tearaway underneath. I have included my design for you to try.

I hope you had fun doing this lesson.

Vanessa